

1. System requirements

LabVIEW versions 2011,2012, and 2013

OpenCL version 1.2.11 or higher.

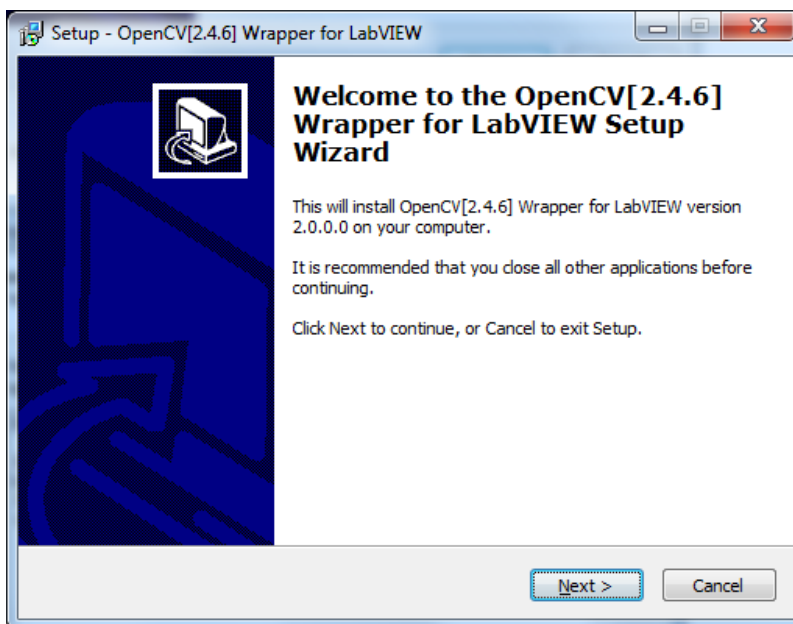
ffdshow <http://www.free-codecs.com/download/ffdshow.htm>

2. Download

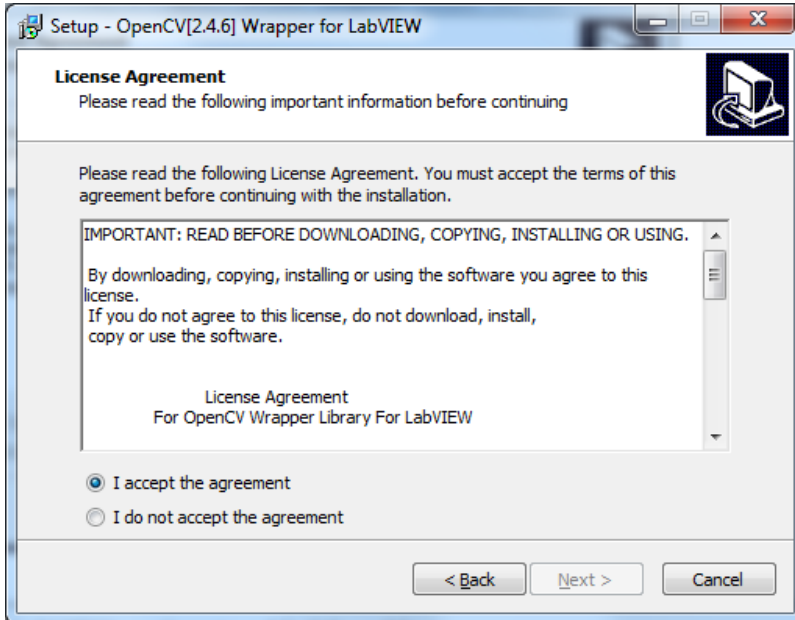
Download last version from http://ehe-lab.com/OpenCV_Wrapper.html

3. Install

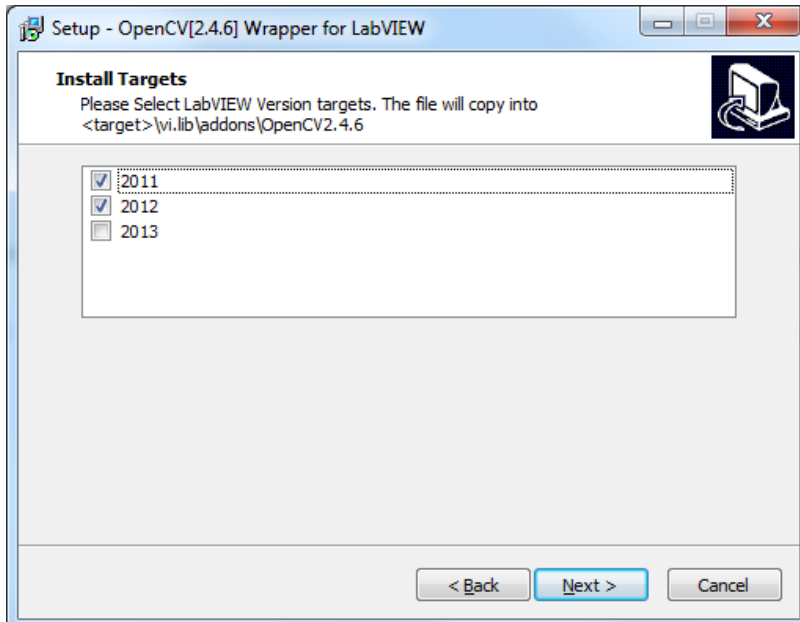
To run the OpenCV Wrapper for LabVIEW Installation, locate the file OpenCV_Wrapper_Installer[2.0.0.0].exe on your computer. Double click the icon to run it. If you're not logged in as an administrator, you may need to right-click OpenCV_Wrapper_Installer[2.0.0.0].exe and select "Run as administrator."



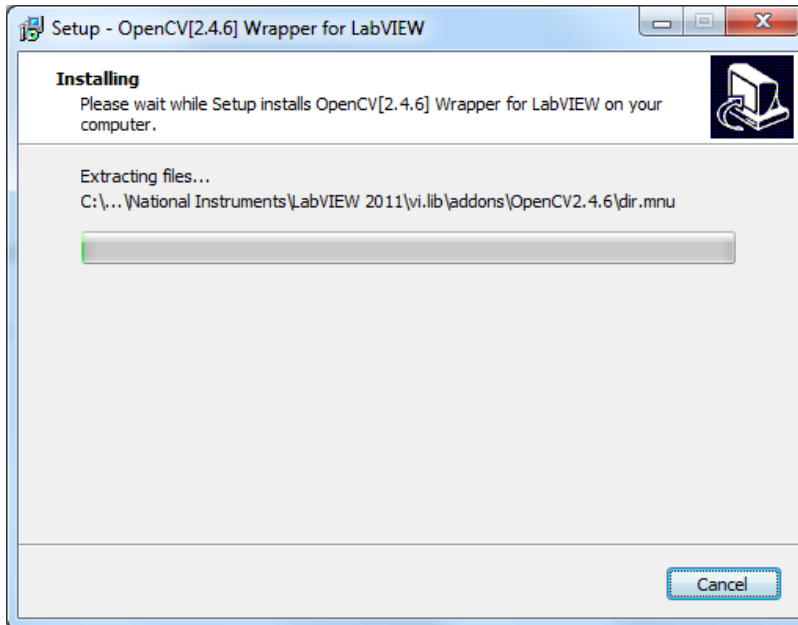
Please read the license agreements that displays when setup loads.



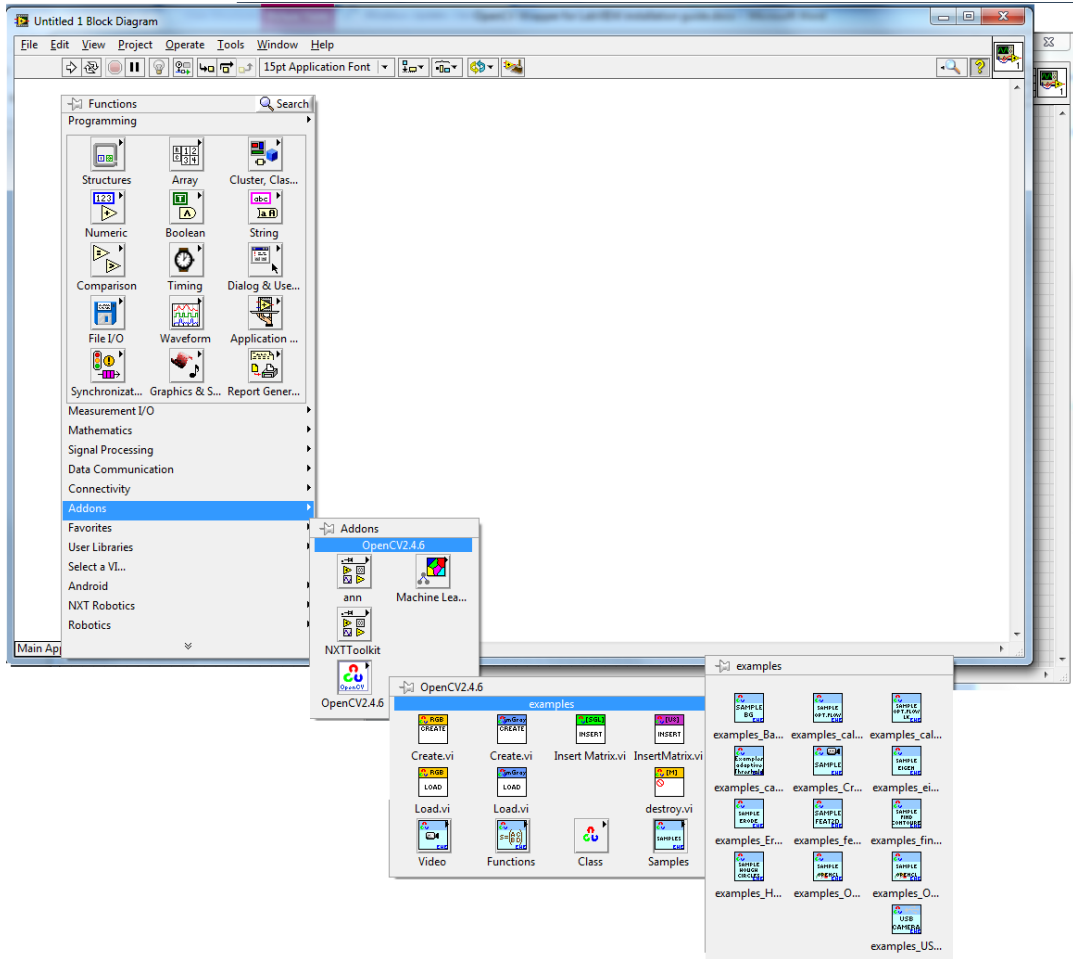
Select LabVIEW versions to added the addons.



Installer will copy file to target location.



Open/reopen LabVIEW select example from
function>>addons>>OpenCV2.4.6>>Sample

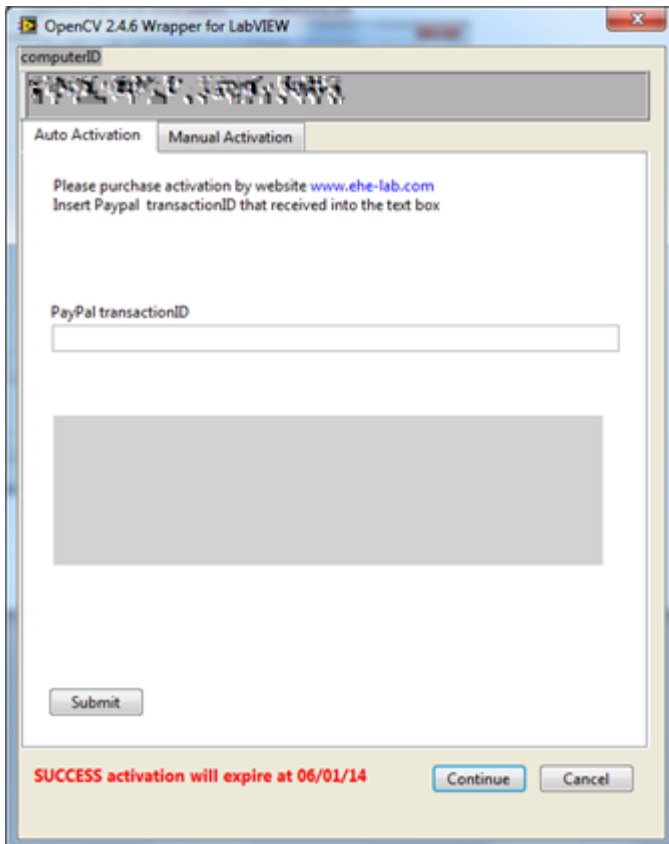


4. ACTIVATION

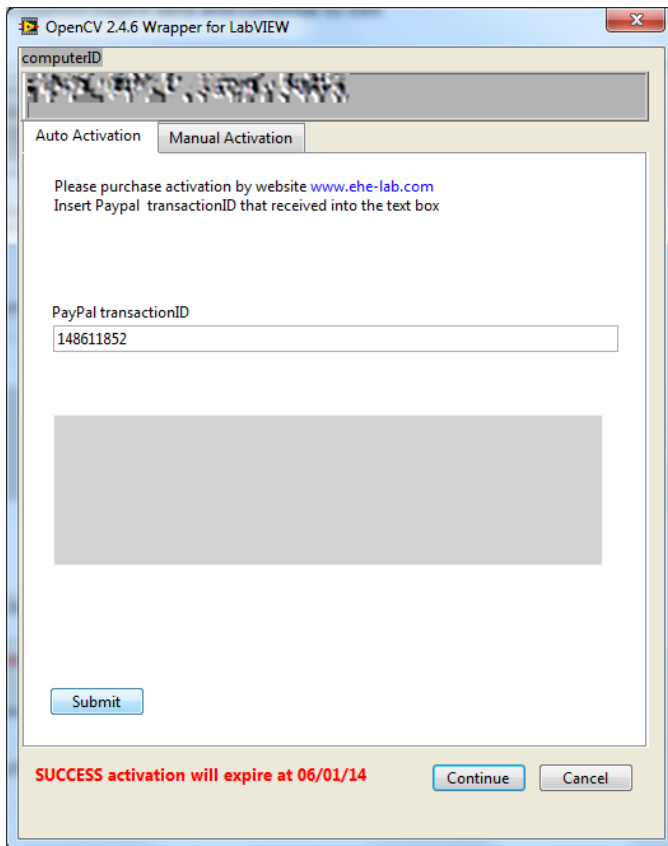
Load <addons>/opencv2.4.6/ Activator.vi
Select OpenCV2.4.6 Wrapper For LabVIEW



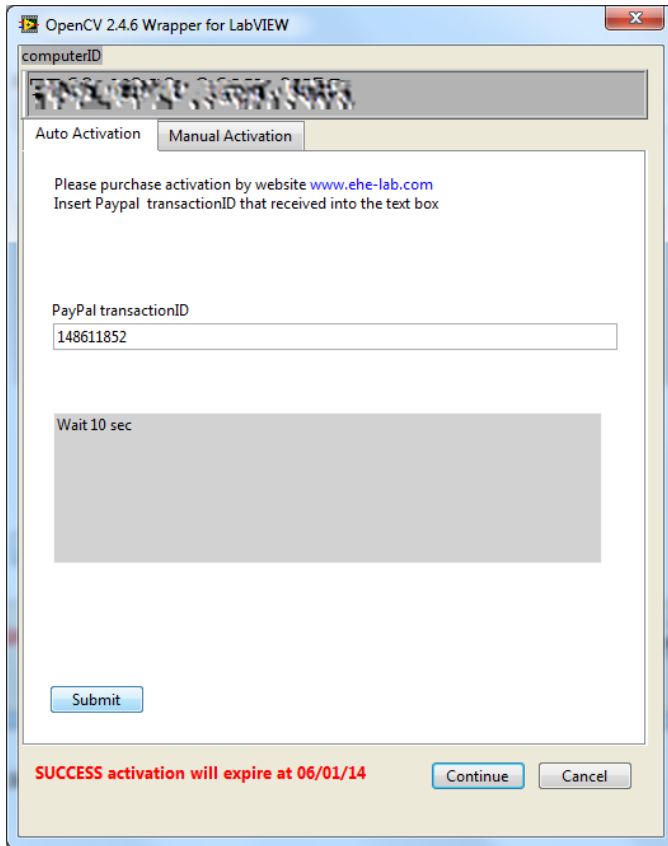
See activation expire data and continue to exit



For activate with transactionID Insert PayPal transactionID and press submit



Wait 10 sec



When you get success message you can press continue to continue work with OpenCV wrapper for LabVIEW.

